



**MEF Q2 Members Meeting - LISBON, APRIL 13-16 2015**

---

**ALESSANDRO TALOTTA - CEO TI SPARKLE**  
*MEF Board Member*



---

TELECOM ITALIA GROUP



# TELECOM ITALIA OVERVIEW



**Employees**

**65,872**

**Customers (Mn)**

**118**

**Revenues (Bn €) *(as of December 2014)***

**21,463**

# TI SPARKLE GROUP OVERVIEW

## COMPANY DATA

(as of December 2014)

**Headcount**

**637**

**Countries of presence**

**39**

**Network coverage**

**# PoPs 120**

**PoPs via partners**

**>1.000**

## KEY FIGURES

(as of December 2014)

**Voice Traffic** (BN minutes)

**16.0**

**Revenues** (BN €)

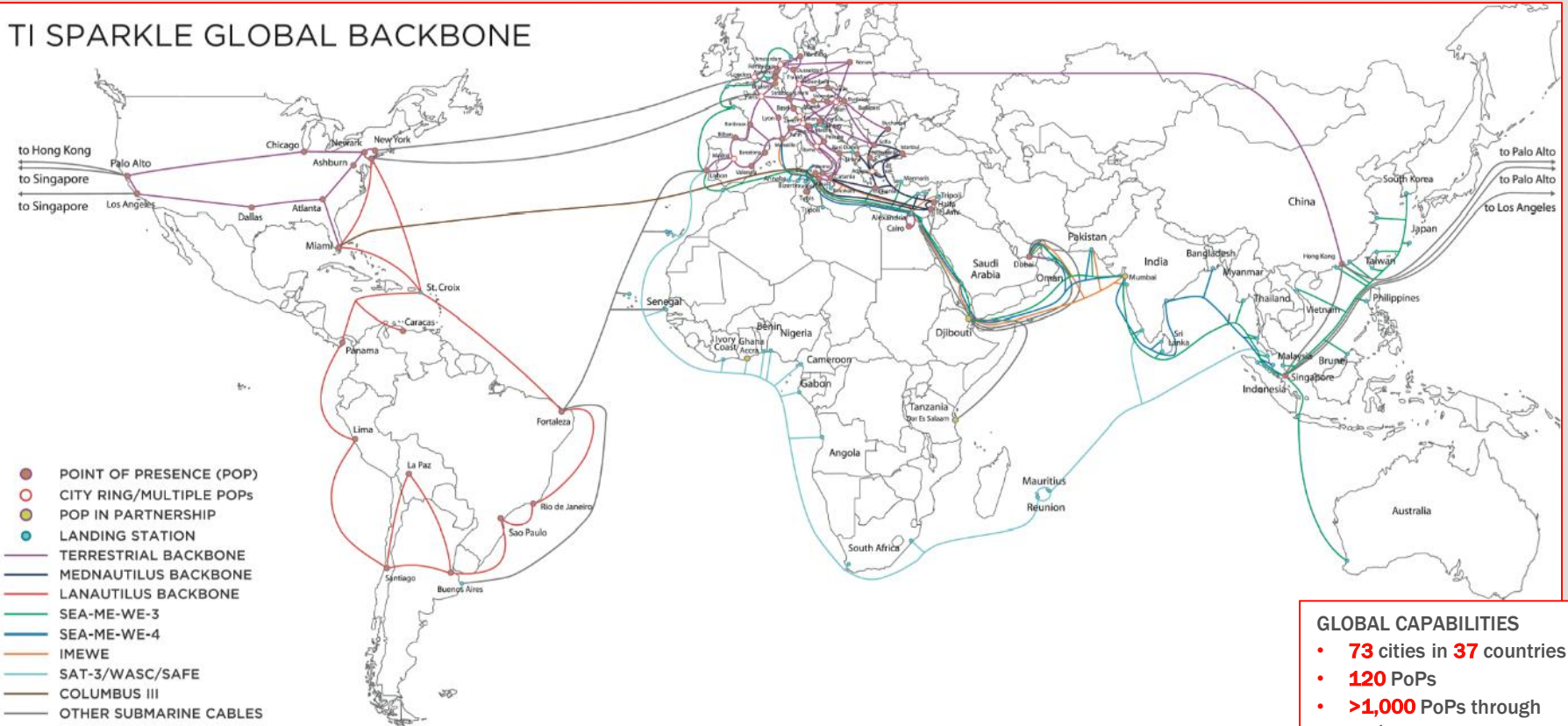
**1.24**



# TI SPARKLE GROUP GLOBAL NETWORK



## TI SPARKLE GLOBAL BACKBONE



- Full IP Global Network with integrated and resilient proprietary backbones in Europe, Mediterranean Basin and Americas
- Unique dual protected fiber path in Europe and global meshed architecture providing full resilience
- Unique footprint in the Mediterranean, Gulf and South East Asia through MedNautilus, SMW3/4, upcoming SMW5, IMEWE and bilateral cable systems
- New POPs in Ghana and Tanzania for the provision of IP&DATA services and in Tirana and Tunis for the provision of MNCs solutions

**GLOBAL CAPABILITIES**

- **73** cities in **37** countries
- **120** PoPs
- **>1,000** PoPs through partners
- **55,000** km/fibre PEB
- **32,000** km LAN
- **10,800** km MED
- **14,000** km/fibre Italian network
- **450,000** km submarine cables

Data as of March 2015

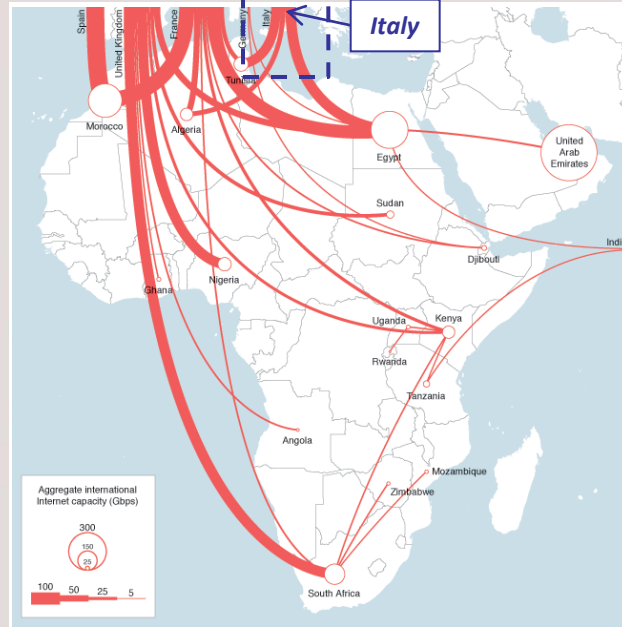


## IP BACKBONE RANKING

	March 2015
Level 3	1 <sup>^</sup>
Teliasonera	2 <sup>^</sup>
GTT	3 <sup>^</sup>
NTT	4 <sup>^</sup>
Cogent	5 <sup>^</sup>
Tata Communications	6 <sup>^</sup>
SprintLink	7 <sup>^</sup>
<b>TI Sparkle</b>	<b>8<sup>^</sup></b>
Verizon	9 <sup>^</sup>
PCCW	10 <sup>^</sup>

Source: Renesys, March 2015

## AMONG TOP 3 INT'L IP ROUTES IN AFRICA



Source: Telegeography Data 2014

## INT'L VOICE WW RANKING

Traffic volumes worldwide

Bn Min		2014
Tata	1 <sup>^</sup>	52,5
Vodafone CS	2 <sup>^</sup>	40,0
Orange	3 <sup>^</sup>	31,2
BICS	4 <sup>^</sup>	27,4
Telefonica	5 <sup>^</sup>	24,4
iBasis	6 <sup>^</sup>	24,0
IDT	7 <sup>^</sup>	21,0
DT	8 <sup>^</sup>	19,0
Reliance	9 <sup>^</sup>	18,0
<b>TI Sparkle</b>	<b>10<sup>^</sup></b>	<b>16,0</b>

Internal Sources



TI Sparkle Global IP Backbone “Seabone” ranks **#8** worldwide and leader in the Mediterranean (Renesys, March 2015)



Among the few global players currently active in the wholesale mobile market



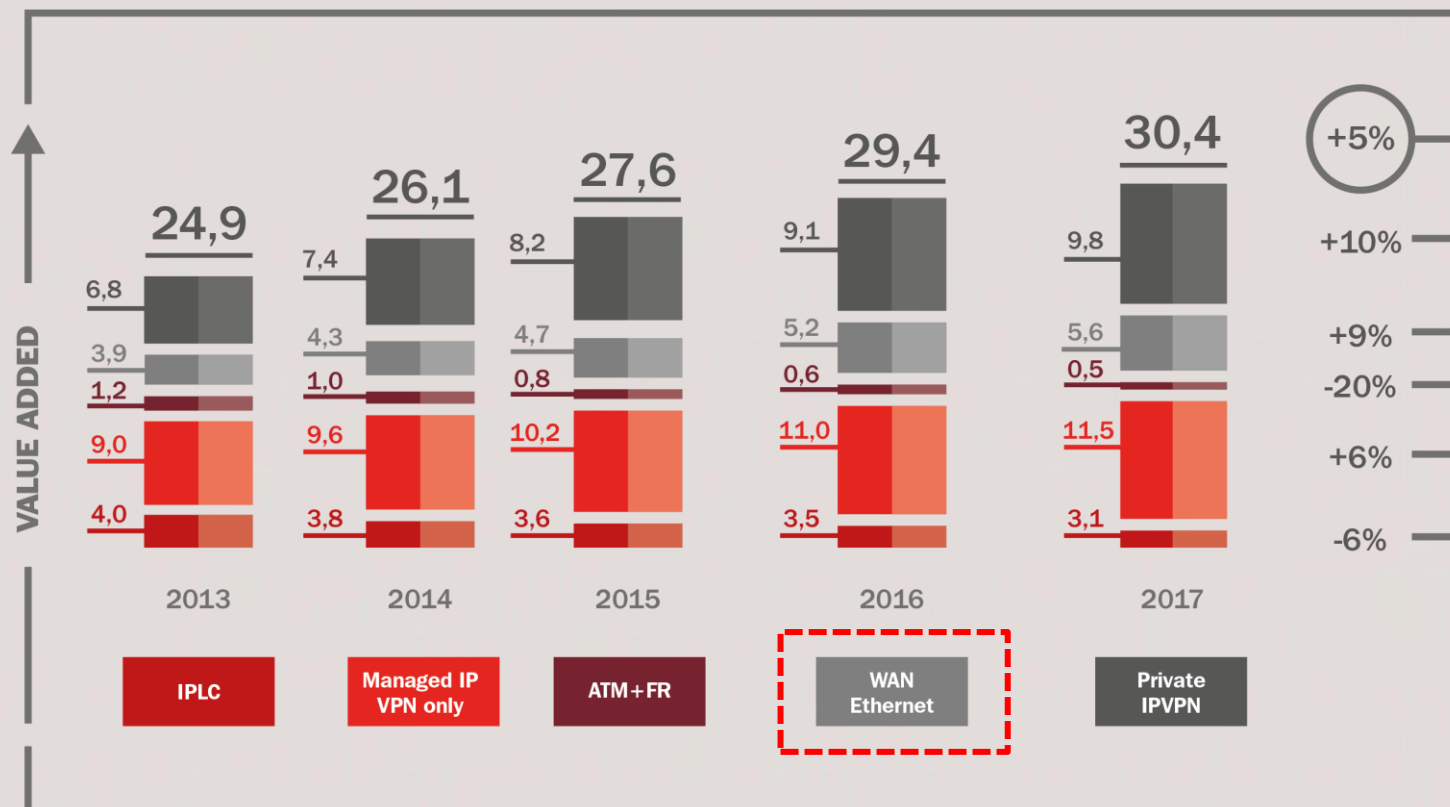
**#1** in Italy, challenger in Europe and emerging player on the global market



**#10** for worldwide traffic collected on an international basis



## Total Corporate International Data Networking - Spending by Services (€ Bn)



### Growth driven by IP-VPN and Ethernet services

In particular, Ethernet services – characterized by low cost, ease of use and scalability - are driven by corporate need to reduce OPEX by outsourcing IT infrastructure and adopting web services to replace the traditional business management software solutions.

- Ethernet Suite allows Customers to permanently connect their premises through End-to-End Ethernet connectivity services.
- The solution is based on Sparkle's Metro Ethernet Forum certified state-of-the-art MPLS backbone, and coverage is extended at a global level through selected partners.

Under the Ethernet Suite Service, Sparkle provides the following Ethernet service types:

- **Ethernet Line Service type (E-LINE):**  
connection between only two User Network Interfaces
- **Ethernet LAN Service type (E-LAN):**  
multiple UNIs are connected as physical LAN.
- **Ethernet Access Service type (E-Access):**  
Specific Ethernet Service type for Sparkle Customers with own Ethernet L2 Service backbone.

## MEF Compliant Carrier Ethernet continuous evolution

2006



2011



2013



2014



GEN14







## Common language with customers and partners

- *Simplifying and speeding up interconnections with partners and customers:*  
**CE 2.0 NNIs: # 30 in one year**
- *Expand geographical reach:*  
**wide homogeneous coverage**
- *Enlarge Customer base: easy qualification process*

## Value for Money

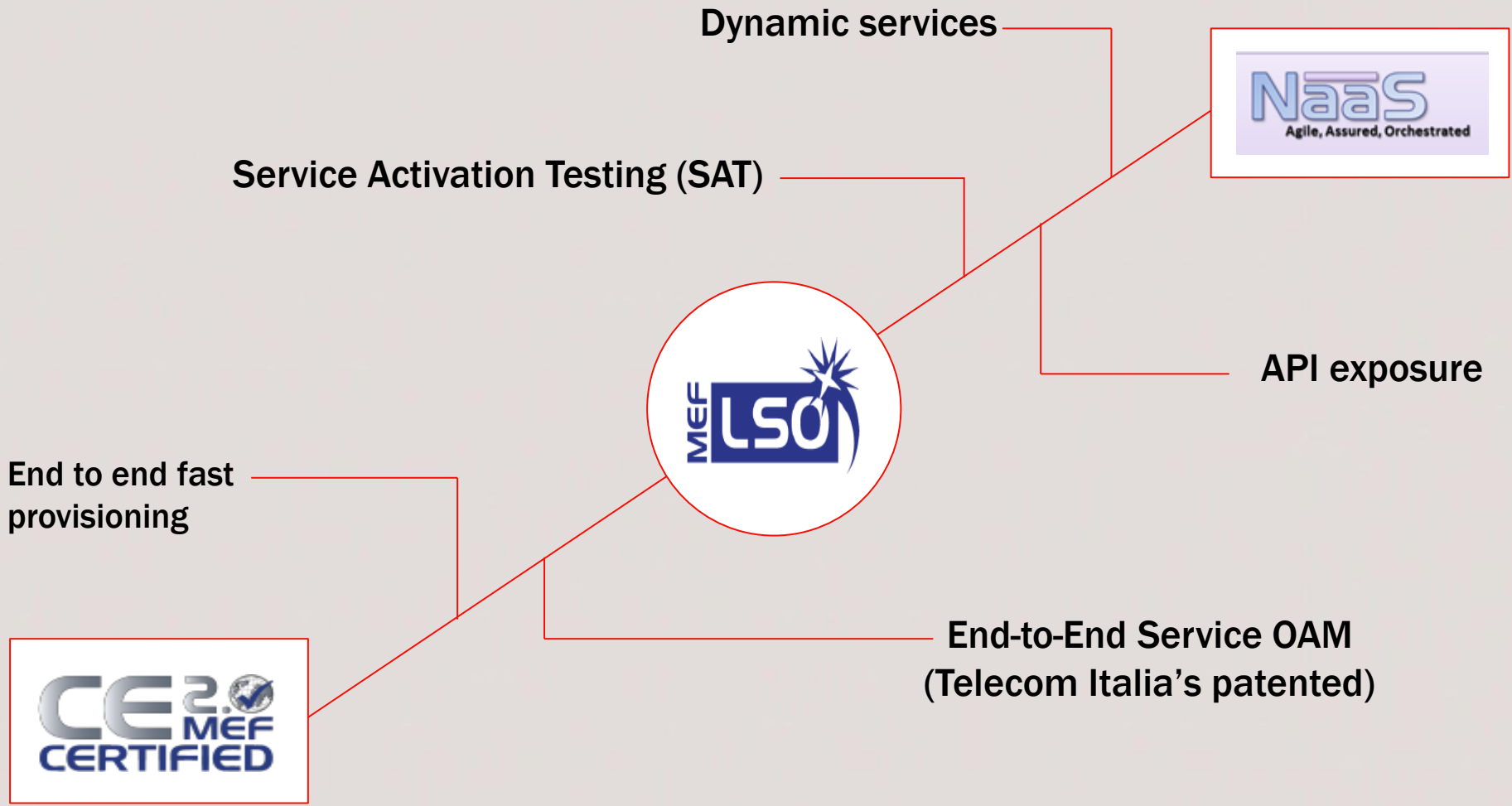
- *Quality as driver : **launched new valuable profiles***
- *Quality vs Price : **a wide service portfolio with the proper mix***

Telecom Italia and Telecom Italia Sparkle are moving towards LSO networks

*MEF Survey Report 2015: The communications services industry is undergoing a paradigm shift from static connectivity services toward more dynamic/agile and assured connectivity services that are orchestrated over more automated and interconnected networks.*



A Customer Centric solution Agile, Assured, Orchestrated, in line with MEF NaaS vision



TI Sparkle has announced Network as a Service (NaaS) in partnership with Cloud Players & Data Center Providers

TI Sparkle NaaS solutions to provide **private connections** & bandwidth on-demand to Cloud and Broadcaster ecosystems by connecting:

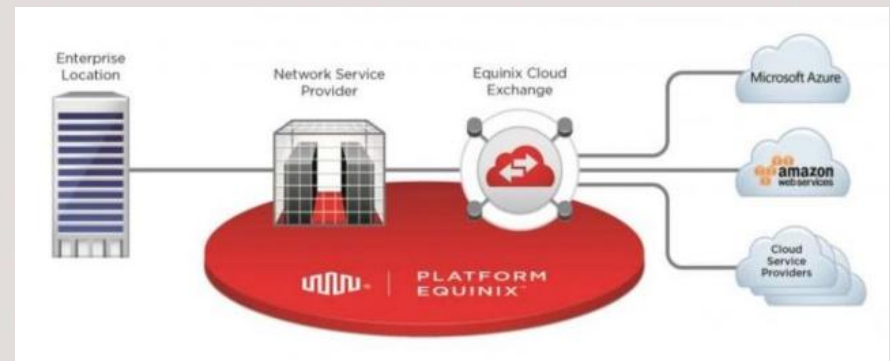
- **Main Data Centers and Cloud Players**
- **Media Hubs**
- **Corporate sites**

TI Sparkle is a partner of Amazon Web Services (AWS) Direct Connect and Equinix Cloud Exchange (ECX) and its network is fully integrated with TI Sparkle Cloud Solutions and the main Italian Data Centers

TODAY

# PHASE 1

**Static private connections**



# THE THIRD NETWORK: LSO BASED SOLUTION



TI Sparkle has announced Network as a Service (NaaS) in partnership with Cloud Players & Data Center Providers

TI Sparkle NaaS solutions to provide private connections & bandwidth **on-demand** to Cloud and Broadcaster ecosystems by connecting

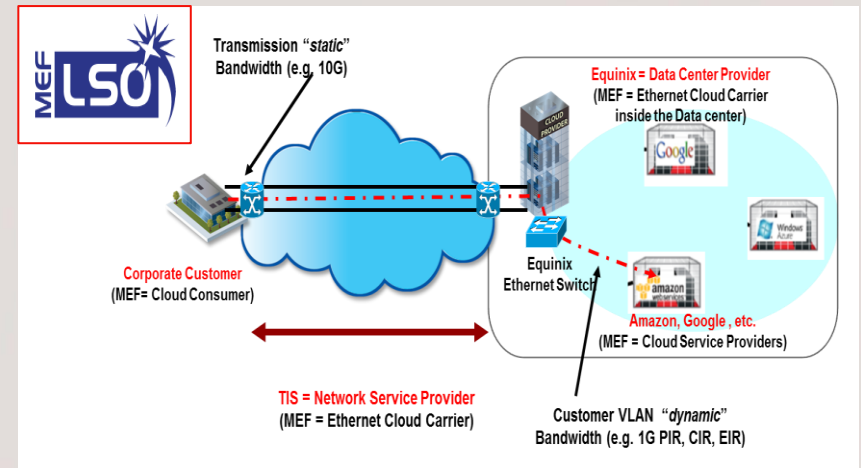
- **Main Data Centers and Cloud Players**
- **Media Hubs**
- **Corporate sites**

TI Sparkle is a partner of Amazon Web Services (AWS) Direct Connect and Equinix Cloud Exchange (ECX) and its network is fully integrated with TI Sparkle Cloud Solutions and the main Italian Data Centers

NEXT STEP

## PHASE 2

On demand connections based on LSO



**Our aim: a seamless end-to-end service with LSO in an international network**



**2015: PROOF OF CONCEPT AMONG  
TI GROUP COMPANIES**

**NEXT STEP 2016: EXTENSION  
TO THIRD PARTIES COLLABORATION**