



# **CORPORATE PRESENTATION**



# Sparkle at a glance

## COMPANY DATA

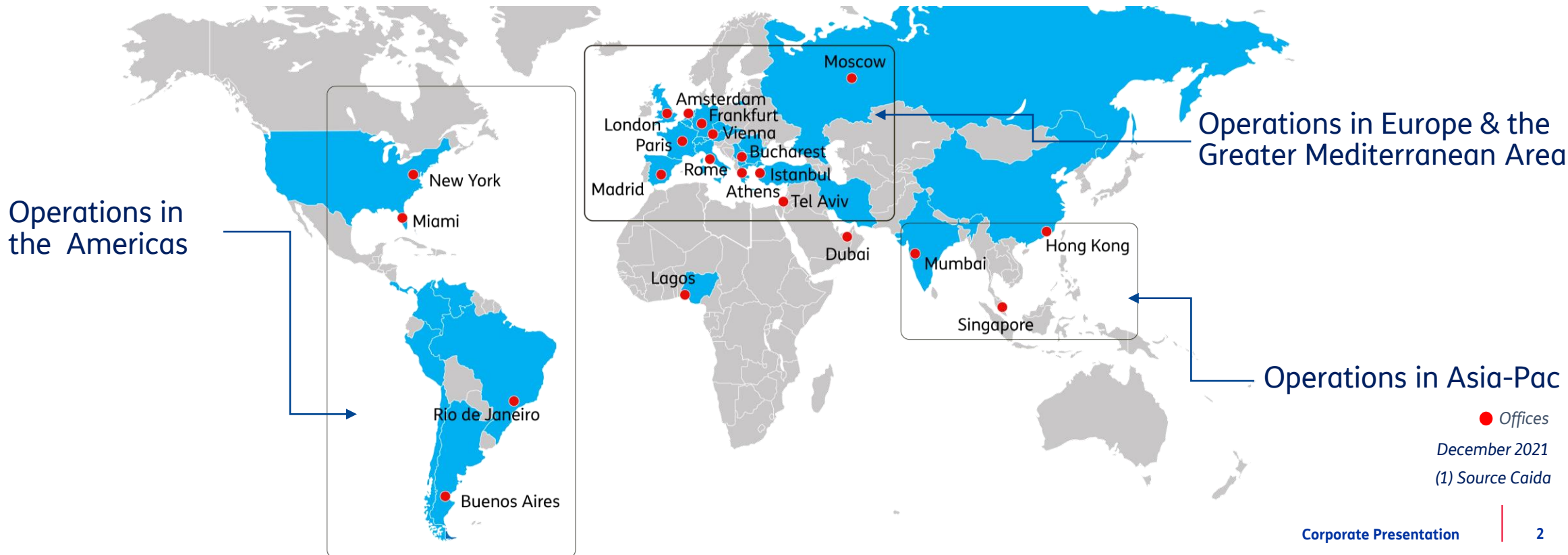
Commercial Operations in **32 Countries**  
Headcount **719**  
**600,000 km** fiber optics  
**164 PoPs** Network coverage  
PoPs via partners **>1,000**

## AT A GLANCE

**100%** TIM Group  
**1<sup>st</sup>** International Service Provider in Italy  
Among the **Top-10** Global Operators  
Ranked **#5** for Seabone (AS 6762),  
Sparkle's Global IP Transit Backbone <sup>(1)</sup>

## KEY FIGURES

**1,900** Customers  
Voice Traffic **8B minutes**  
Data Traffic **77 Tbps**  
**1,008 MEUR** Revenues



# Positioning



**Leader** in Italy for **Multinational Enterprises** offering, challenger in Europe and Africa and emerging player in the rest of the world



**Multicloud & Data Center** solutions with strategic assets in the Mediterranean



**Seabone**, Sparkle's Global IP Backbone, ranks **5<sup>th</sup>** worldwide and is leader in the Mediterranean, Middle East, Africa and in South America



Global Player for **Mobile Connectivity** and **IoT Solutions**



**Top Global Player** for worldwide **Voice** traffic collected on an international basis



# Key Assets

#01

Global Services Portfolio for **Enterprises, Media & Content Players, Application Service Providers, OTTs, ISPs, Fixed and Mobile Operators**

#02

**Worldwide presence in 32 countries** based on fully owned companies and offices

#03

**State-of-the-art Global Network** with proprietary backbones in **Europe**, the **Mediterranean Basin** and the **Americas** and ownership in submarine cables connecting Europe with **South-East Asia**

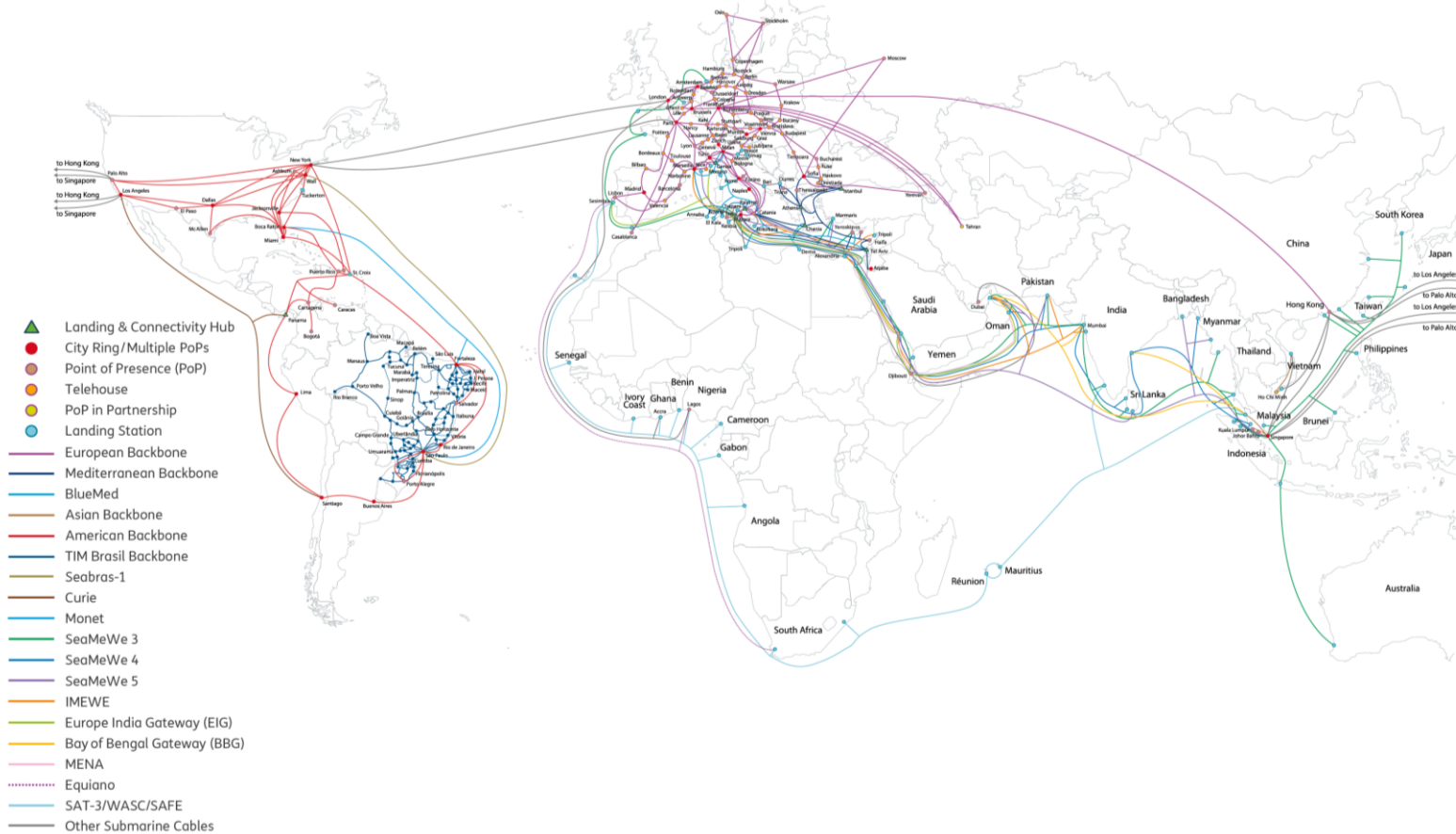
#04

**Customer care** at the center of the system, active 24x7x365, with **multilingual Call Center** supported by **three global NOCs** with 24/7 coverage



# Global Backbone

Sparkle's backbone represents the highway that allows, also through **agreements with over 200 regional and local operators**, to reach **any destination in the world**



Sparkle owns and manages a **global and technologically advanced proprietary network of over 600,000 km of fiber** which include **three major regional systems in Europe, the Mediterranean and the Americas** as well as an extensive ownership in major international submarine cables

- **81 cities in 44 countries**
- **164 proprietary PoPs (Point of Presence)**
- **>1,000 PoPs through partners**
- **3 Network Operation Centers “around the clock”**

# Service Portfolio



## ENTERPRISE

Complete portfolio of services, including global connectivity and ICT, aimed at serving the needs of enterprises with the highest performance level



## BACKBONE & INFRASTRUCTURE

Advanced solutions to access the Big Internet with secure global IP transit

Complete range of transport products designed for any connectivity needs - from high performance international bandwidth to fiber and spectrum solutions

Colocation available in Landing and Connectivity Hubs



## MOBILE

Seamless global voice services to support Enterprises around the world

Full IoT solutions for remote control of devices



## CLOUD

Suite of highly flexible and scalable top class integrated IaaS, PaaS and SaaS that meets the ever growing need of cost efficient and top security IT solutions



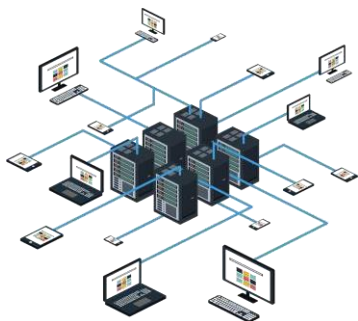
## VOICE

Voice Solutions offer worldwide voice capabilities to Carriers, Service Providers and Mobile Operators combining network reliability, competitive pricing and excellent routing solutions

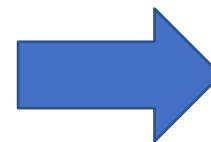
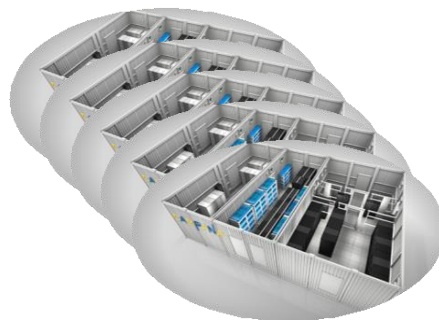


# Landing and Connectivity Hub

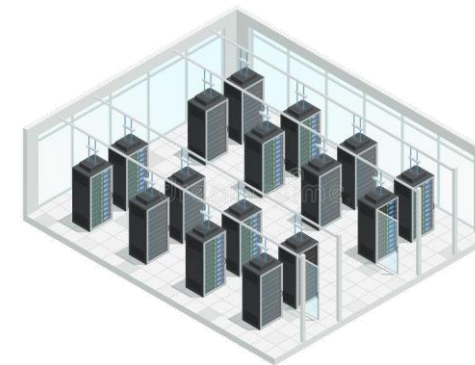
Colocation in state of the art  
data center facility



Cable Landing Station



Landing & Connectivity Hub



## 9 Proprietary Hubs:

- **Italy (Palermo Sicily Hub)** - 18 submarine cables - 2 MW
- **Italy (Genoa - RFS Q1 2023)** - 2 submarine cables
- **Greece (Athens and Chania - 4 Hubs)** - 2 submarine cables - 14 MW
- **Turkey (Istanbul)** - 2 submarine cables - 2.5 MW
- **Panama** (RFS Q4 2022) - 6 submarine cables - 5 MW
- **Israel (Tel Aviv - RFS Q1 2023)** - 3 submarine cables - 1 MW



# Solutions for Enterprises

Sparkle is the ideal partner to support business growth driven by digitalization through:

The most innovative Cloud and Multicloud solutions to accompany companies in the digitization process

Focus on network and asset security with DDoS and SASE

Advanced network solutions for flexible connectivity for companies and to the main Cloud providers: SD-WAN, MPLS, Internet Access





# Solutions for Enterprises

## Connectivity

### Evolved - Flexible - Managed

- **Cloud Connect** - high performance dedicated connectivity to the major Cloud Providers
- **Bandwidth on Demand (BoD)** for Ethernet services
- **SD-WAN** as an evolution of IP MPLS services for **greater flexibility** towards **Cloud solutions** and **multisite connectivity**
- **Direct Internet Access (DIA)** for high performance Internet access

## Security

### Network - Asset - SOC

- **End-to-end network security features, DDoS and SASE**
- **Security control and management services** through the highly specialized Sparkle's SOC
- **Cloud Security:** the best and most reliable Authentication service for multicloud

## Cloud

### Multicloud

- **Multicloud platform** for access to different Cloud Providers and flow optimization
- **Online marketplace:** Self-Management white label marketplace and advanced SaaS solutions
- **Dedicated and dynamic connectivity** to the major Cloud Providers
- **Back-up and Data Recovery services with flexible solutions** at Sparkle's Data Centers

# Solutions for Enterprises

## Enterprise Voice Suite

- **Geonumbering service** to make global communication needs local
- **SIP Trunking** enables fast and reliable VoIP interface with customers
- **PSTN Replacement** for smart management of A-Number with local Numbers, based on dialed destination
- **VAS Applications** integrate dedicated modules for Centrex and Call-Center functionality, interface with third-party UCCaaS
- **Web Access Dashboard** offers complete off-net traffic control and QoS KPIs

## IoT

- Supply of **SIM/eSIM** able to register under visited network worldwide
- Mobile cloud network infrastructure for **ultra-low latency connectivity**
- IoT platforms for connectivity and device management
- Advanced **billing modules**
- **Plug & Play IoT**



# Excellence in the Industry: Certifications



Certificate of Origin - **Certification for the use of renewable energy in the data centers of Metamorfosis (Athens), Koropi and Chania**



Quality, Health & Safety and Environment - **ISO 9001, ISO 14001, ISO 45001, ISO 27001**



**MEF 3.0 Carrier Ethernet**



**MEF 3.0 LSO Sonata API**



# Excellence in the Industry: International Awards



Global Carrier Awards 2022, the most prestigious competition for the international wholesale sector, in the category **Best Subsea Innovation**. This award acknowledges the innovative scope of Sparkle's Genoa Landing Platform, a new infrastructure designed to ensure the sustainable landing of submarine cables seeking diversified access to the major European hubs



**Best Data/Capacity Provider** and **Best Digital Transformation Programme** at the Carrier Community Global Awards 2022. These prizes recognize Sparkle's excellence in deploying forward-looking technologies as well as the quality of its most recent large-scale infrastructural projects and innovative solutions in the IP & Data area, and Sparkle's successful One Customer View/One Company View digital transformation project aimed at improving customer experience



**Customer Experience prize** at the World Communication Awards 2021 as a recognition for the company-wide CX program deployed across three dimensions - process automation, digital tools and a customer-focused organization - to deliver an engaging customer journey experience



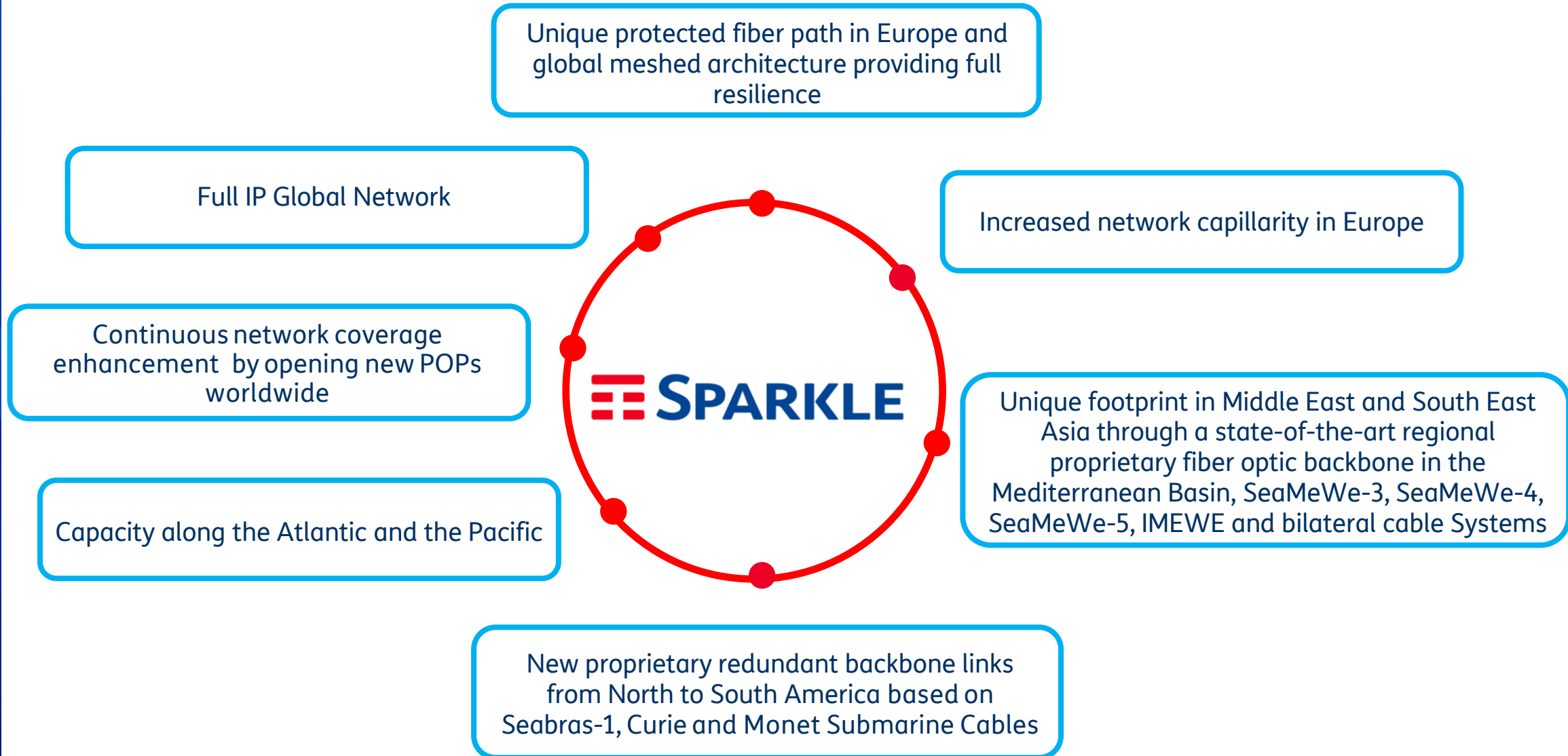
**BUSINESS  
IMPACT**

**Business Impact Award** received from MEF in March 2021 for a Proof of Concept on Secure Access Service Edge (SASE). The "Remote Employee Access to Cloud" PoC demonstrated how Sparkle enables multinational enterprises to deploy a post-pandemic hybrid workplace model, establishing secure and effective remote employee access to company resources located in multiple clouds or on premise

# FOCUS ON SPARKLE'S BACKBONE



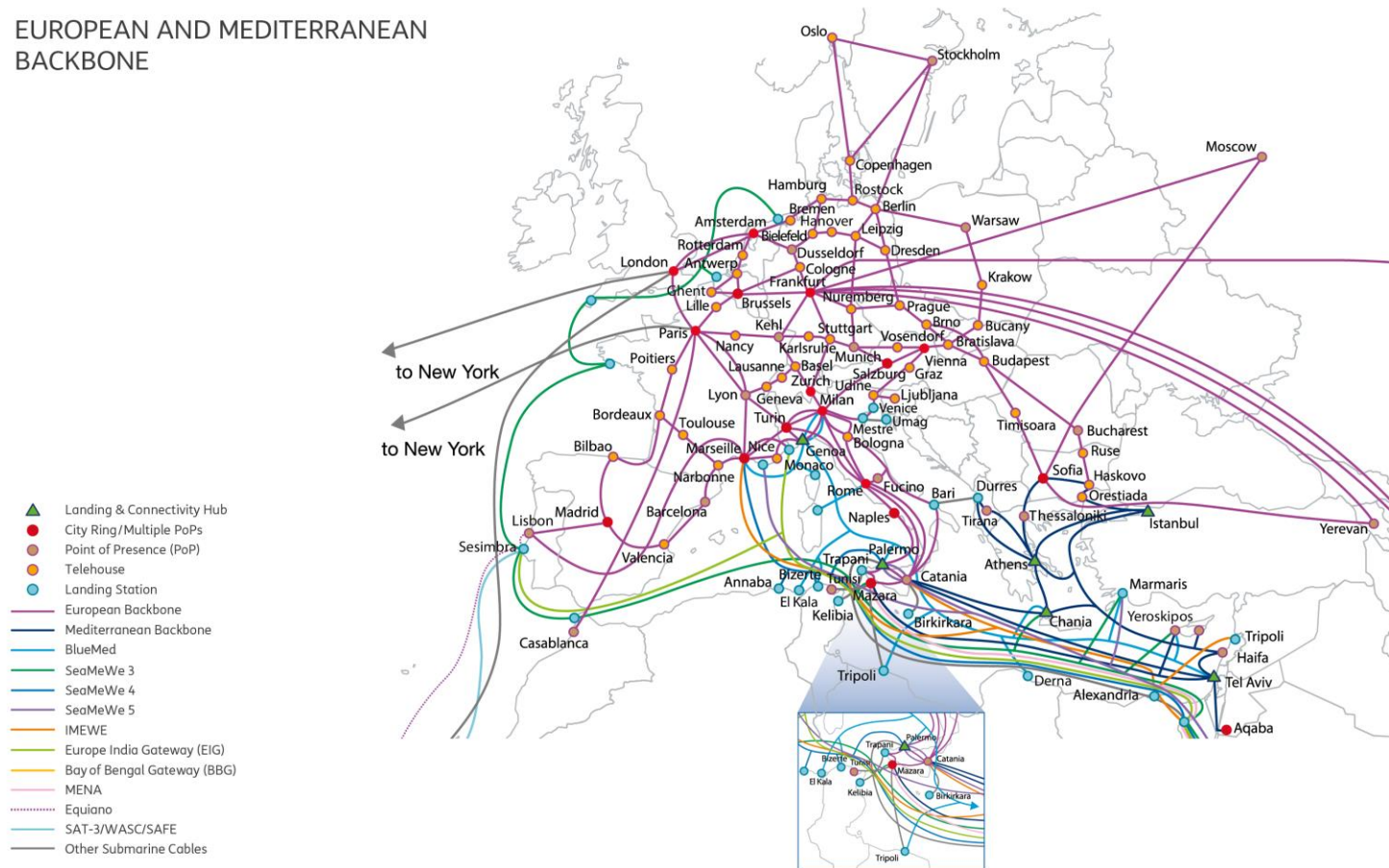
# Global Backbone





# Key Regional Backbones: Europe and Mediterranean

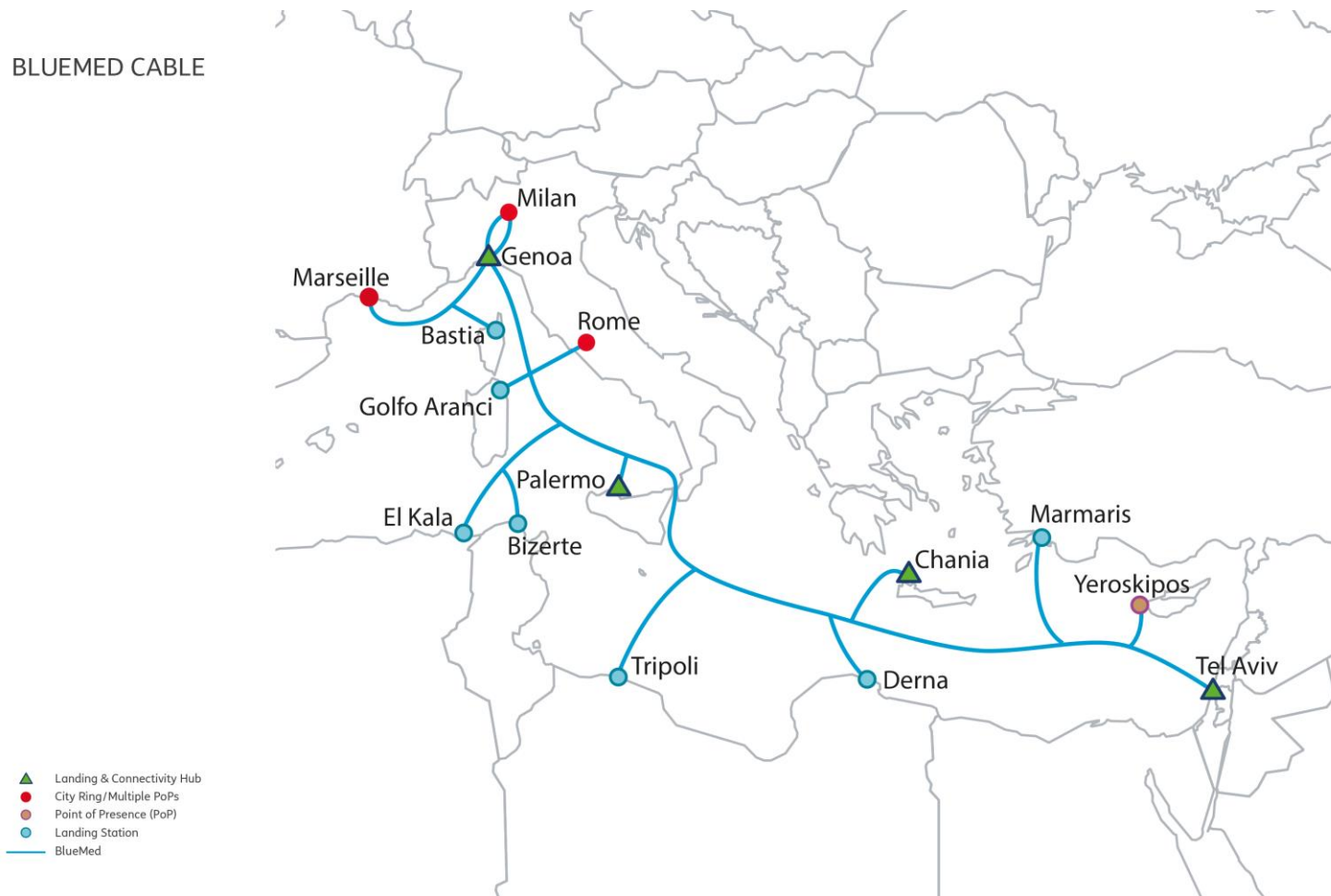
## EUROPEAN AND MEDITERRANEAN BACKBONE



- Increased network capillarity in Europe
- Unique protection from Istanbul to Europe through terrestrial and submarine networks
- Diversified and protected backbone links in the Balkans as alternative route to connect Europe to Africa, Middle and Far East
- New direct route between Athens and Milan - “Albania Crossing” - providing the shortest and fastest route from the Balkans to the main Western European internet ecosystems, adding diversity and redundancy to the existing routes
- New POPs in Moscow and Casablanca for the offering to Enterprises

# Reinforcing Leadership in the Mediterranean through BlueMed

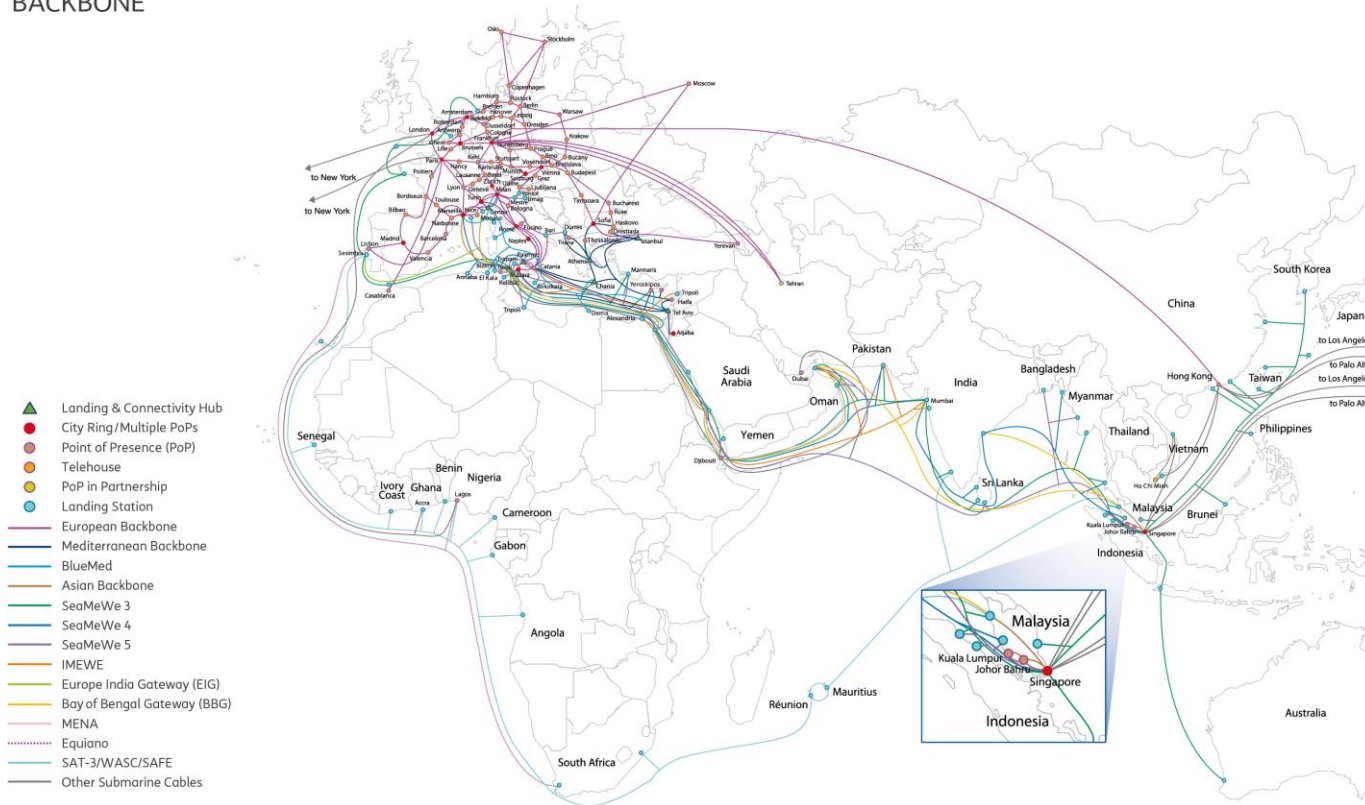
BLUEMED CABLE



- Sparkle proprietary domain in the Med basin
- **4 Fiber Pairs System / Min 25 Tbps per FP**
- RFS from **4Q2022**
- **Expected RFS 2022**
- New **East of Sardinia** route and **Messina** strait configuration
- Landing in Telehouses or **open landing facilities in key Countries**
- Sparkle's new open landing station in **Genoa** is set to become the **alternative priority access for other upcoming submarine cables** looking for a diversified entry way to Europe, thus **strengthening Italy's role as digital gateway between Africa, Middle East, Asia and Europe**

# Strategic Focus on Med, ME, Africa & APAC Corridors

## EUROPE, MIDDLE EAST, AFRICA AND ASIA BACKBONE



Through Sparkle's global network, operators in fast-growing markets of Middle East and Asia have access to worldwide contents with unrivalled performance through a 2-way path connecting Sparkle's Asian network to Europe and US, both East and Westbound

### EUROPE & MEDITERRANEAN

- Fully resilient Pan European backbone covering 13 countries
- State-of-the-art regional proprietary fiber optic backbone covering : Italy, Turkey, Israel, Greece, Cyprus
- Proprietary submarine cable Athens-Istanbul
- Bilateral cables with, Albania, Croatia, Malta, Libya and Tunisia

### EUROPE TO AFRICA, ME & ASIA

- **SeaMeWe-4 cable:** France, Algeria, Tunisia, Italy, Egypt, Saudi Arabia, India, South-East Asia
- **SeaMeWe-5 cable:** Europe to Asia, reaching 17 countries, with a main landing in Catania, Sicily
- **IMEWE cable:** France, Italy, Lebanon, Egypt, Saudi Arabia, United Arab Emirates, Pakistan, India
- Other Submarine Cables: **SeaMeWe-3, EIG, BBG** and **MENA** (Europe, Africa, Middle East, Far East)

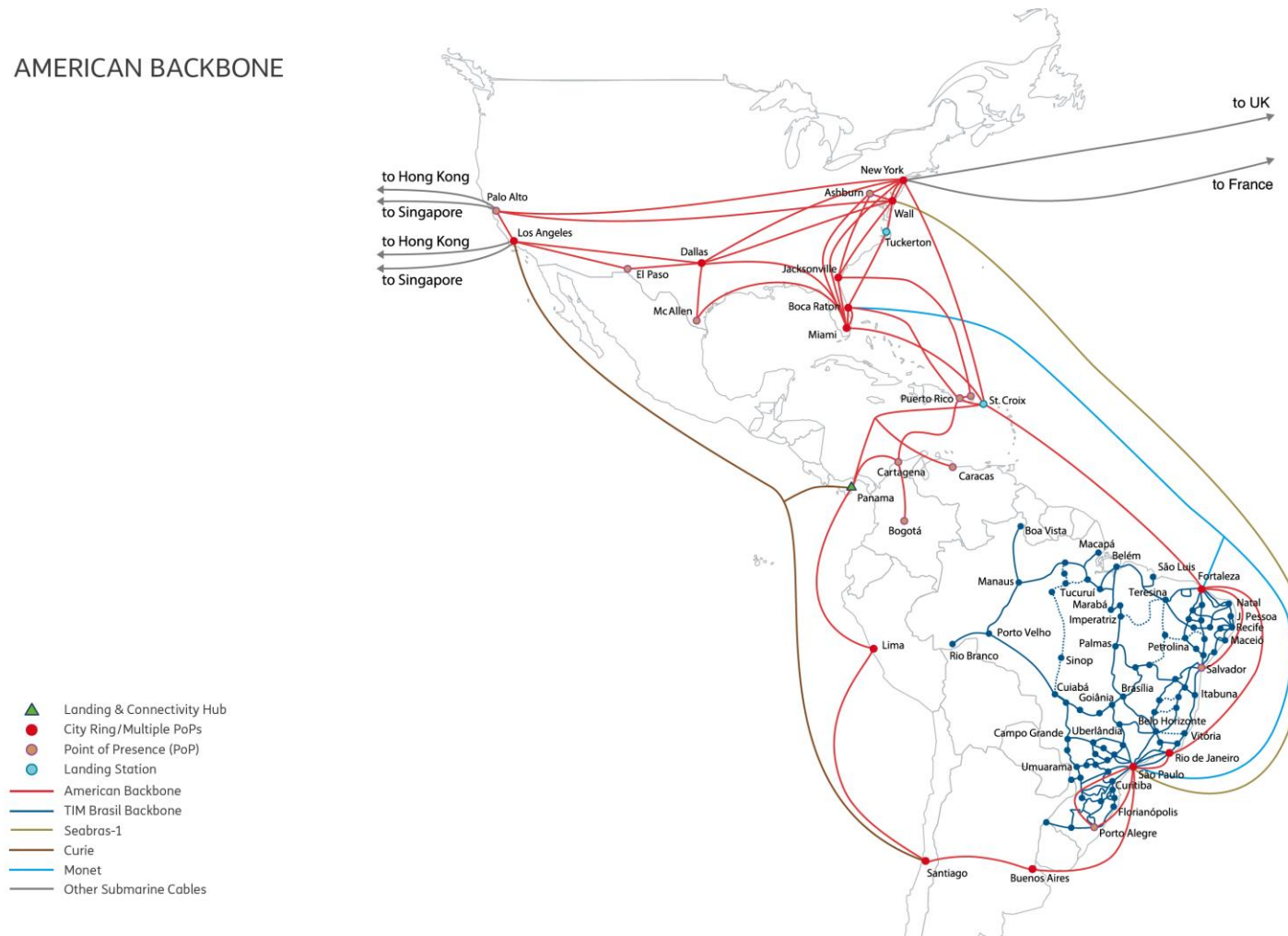
### EUROPE TO WEST AFRICA & SOUTH AMERICA

- **SAT-3** (Europe, West Africa), **EQUIANO** (Europe, West Africa, South Africa)



# Key Regional Backbones: Americas

AMERICAN BACKBONE



- Full IP network in the Americas
- **State-of-the-art proprietary fiber optic backbone in 8 countries: US, Argentina, Brazil, Chile, Colombia, Panama, Peru, Venezuela**
- New proprietary redundant backbone links from North to South America
- **TIM Brasil Backbone fully integrated with Sparkle's global network**
- **Increased capacity along the South to North America route thanks to Seabras-1 and Monet on the Atlantic**
- **Launch the New Panama open landing and connectivity center aimed to become the digital hub for all Central America, the Andean region and the Caribbean**

The background is a solid dark blue. In the bottom-left corner, there are several overlapping, curved lines in lighter shades of blue and cyan, creating a modern, abstract design element.

THANK YOU